



NEWMAN
COLLEGE

A CATHOLIC SCHOOL
EDUCATING IN THE
MARIST TRADITION

Shine
through
Discovery

LET YOUR LIGHT SHINE MATTHEW 5:16



Newman College 2026 Information Handbook

Challenge — Collaborate — Create — Celebrate



OVERVIEW

The **Newman College 2026 Information Handbook** outlines and summarises key information for 2026 families who have students in Pre-Kindergarten to Year 12. This publication provides the essential information needed for daily life at Newman College. We encourage families to use it as a reference throughout the year.

2026 MARIST THEME

Full of Grace Transform the World with God's Love

As we begin 2026, our College community is invited to join other Marist schools around Australia in living a simple but powerful Marist theme: Full of Grace - transform the world with God's love.

At its heart, this theme reminds us that real change rarely begins with grand gestures. More often, it begins with a quiet yes...a yes to kindness, to compassion, to patience, and to love in the everyday moments of life.

Grace is very simply God's love freely given. It is not something we earn or deserve; it is a gift offered to all of us. When we welcome this gift, it shapes how we treat one another in our homes, classrooms, playgrounds, and wider community. Grace becomes visible in simple, powerful ways: a word of encouragement, listening with care, standing alongside someone who feels unseen, or choosing understanding over judgement.

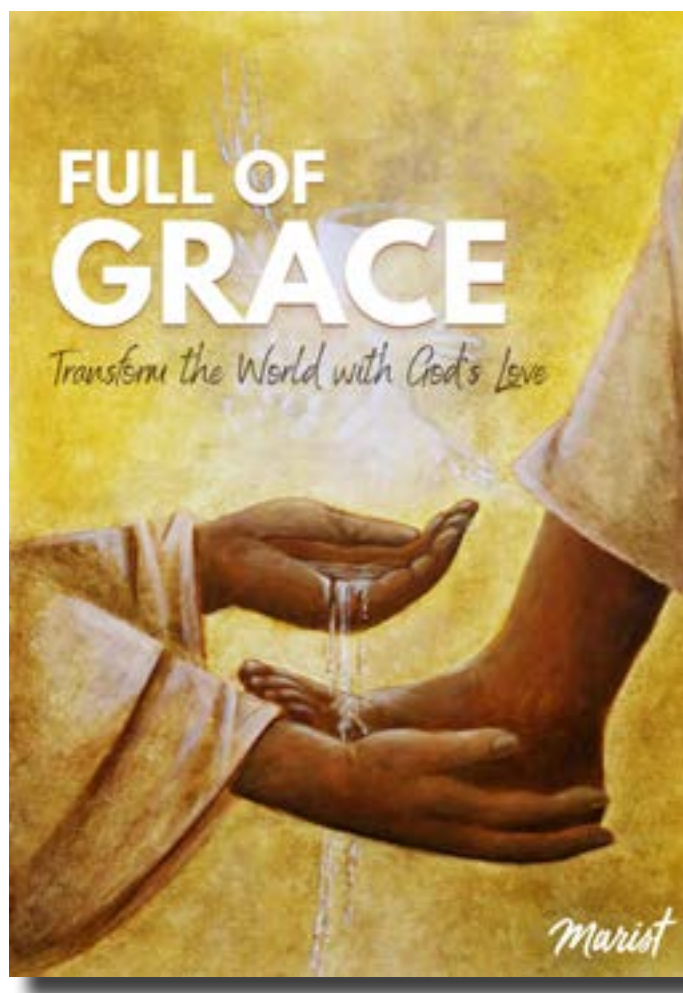
The image accompanying this theme shows Jesus kneeling to wash the feet of his disciples. In this quiet and very human moment, God's love is made tangible. Jesus does not lead through power or status, but through humility, presence, and service. In lowering himself to lift others up, he shows us what it truly means to be full of grace.

In the Marist tradition, we also look to Mary as our model. Her courageous yes to God allowed grace to shape her life and, through her, change the world. Like Mary, and like Jesus in this image, we are invited to allow God's love to guide our choices and our relationships.

In Newman College, living full of grace means striving to be a community that builds bridges, serves humbly, and honours the dignity of every person. It calls us to notice one another, to listen deeply, and to act with compassion, especially when it would be easier to turn away.

Our world longs for peace, hope, and understanding. As a faith community, we believe that grace-filled lives can make a real difference, and through small, faithful acts of love, grace overflows beyond us.

As we journey through 2026 together, may our yes be generous and courageous. In word and action, may we be a community who are truly full of grace, helping to transform the world with God's love, one quiet, faithful act at a time.



KEY DATES & TIMES

College Calendar

The [College Calendar](#) details all official College events. Families should refer to this weekly to keep abreast of upcoming events.

2026 Term Dates

Term	Start	Finish
Term 1	Friday 30 January - Staggered start, see table below.	Thursday 2 April
Term 2	Wednesday 22 April - All Students	Thursday 2 July
Term 3	Wednesday 20 July - All Students	Friday 25 September
Term 4	Tuesday 13 October - PK-11 Students	Wednesday 9 December

2026 School Start Dates

Please refer to the below table for your child's start date and time, as this may differ by year level.

DATE	TIME	TIME	VENUE
Friday 30 January	8.40am	PK-Year 6	Lavalla Campus
Friday 30 January	8.40am 8.40am 8.30am - 10.45am	Year 7 Students Year 12 Students Year 8-11 New students	Founders Court, Marcellin Campus Auditorium, Marcellin Campus Administration, Marcellin Campus
Monday 2 February	8.40am	Year 8-12	Marcellin Campus

2026 Pupil Free Days

TERM	DATE
Term 2	Monday 20 April
Term 2	Tuesday 21 April - Student Learning Conversations KG - Y12
Term 3	Friday 24 July (Y7 - 12 only) - Student Learning Conversations Y7-12
Term 3	Friday 21 August
Term 3	Monday 24 August
Term 4	Monday 12 October

Term One Key Events

The table below provides a summary of some key College events in the first few weeks of Term One. Further information regarding each event will be sent out closer to the date.

EVENT	DATE	TIME	VENUE
Primary Parent Information Evening	Thursday 5 February	5.00pm	Auditorium & Lavalla Campus
Parent Welcome Sundowner	Friday 6 February	5.00pm	Founders Court
Secondary Parent Information Evening	Monday 9 February	5.30pm	Marcellin Campus
High Achievers Assembly	Thursday 12 February	9.30am	Marcellin Gymnasium
PK-12 Family Mass <i>Compulsory student attendance</i>	Tuesday 17 February	5.30pm	Br Terence Gleeson Oval, Marcellin Campus
Y7-12 Guild Swimming Carnival <i>Compulsory student attendance</i>	Thursday 19 February	8.40am	Perth HPC
Y3-6 Guild Swimming Carnival <i>Compulsory student attendance</i>	Friday 27 February	8.40am	College Pool

College Timetable

Primary

Pre-Kindy & Kindy	
Doors Open	8.35am
Commencement Bell	8.40am
Healthy Habits	10.35am
Recess	10.45am
Classes Recommence	11.00am
Lunch	12.40pm
Classes Recommence	1.20pm
School Dismissal	2.45pm

Pre-Primary - Year 6	
Supervision Begins	8.15am
Doors Open	8.35am
Commencement Bell	8.40am
Healthy Habits	10.35am
Recess	10.45am
Classes Recommence	11.00am
Lunch	12.40pm
Classes Recommence	1.20pm
School Dismissal	3.00pm

Secondary

Year 7 - Year 12			
Mon, Tue, Thu, Fri		Wed	
1st Bell	8.35am	1st Bell	8.35am
PCG	8.40am	1	8.40am
1	8.55am	2	9.25am
2	9.50am	3	10.10am
Recess	10.45am	Recess	10.50am
End Recess	11.05am	End Recess	11.05am
3	11.10am	4	11.15am
4	12.00pm	EGT	12.05pm
Lunch	12.50pm	Lunch	12.55pm
End Lunch	1.30pm	End Lunch	1.30pm
5	1.35pm	5	1.35pm
6	2.25pm	6	2.25pm
End of Day	3.15pm	End of Day	3.15pm



GETTING TO AND FROM SCHOOL

Hours of Supervision

PK - PP	Students must be walked to their classroom, classrooms open at 8.35am	Students must be collected from their classroom at the end of each day.
Year 1 - 2	8.15am	3.20pm
Year 3 - 6	8.15am	3.20pm
Year 7 - 12	8.15am	3.35pm

Lavalla Drop Off and Pick Up

Students in Years 1-6 may arrive at school no earlier than 8.15am, when the first staff member commences morning duty. PK - PP Students must be dropped to their classroom no earlier than 8.35am, and must be picked up from their classroom at the end of the school day.

At the end of the day, Year 1-6 students walk to the car park area and wait for parents to pick them up from the designated drive through/pick up area or the park/pick up area. Staff are on duty to supervise all students.



Those students using the public transport system will be accompanied by a teacher to the assembly point on Tuscany Way, where they will be supervised with the secondary students.

Safe Walking Routes

Students who are able are encouraged to walk or ride to school. The [School Access Guide](#), outlines the best walking routes from the surrounding areas into the College. It also indicates the designated secure bike parking (outside the Oval Courts and the Chapel).

E-rideables (scooters and bikes) are not permitted on the campus.

Public Transport

Transperth School Specials travel to and from the College from Perth City, Scarborough, Stirling Station and City Beach. Please use the Transperth [Timetable](#) page and the [Journey Planner](#) for further information.

School specials 710, 715, 716, 717, 718 and 719 depart the College at 3.25pm daily from Tuscany Way. Students will be supervised by teachers as they board the relevant bus.

While travelling on public transport, students are expected to represent the College positively by always adhering to the [Student Code of Conduct](#) and the [Uniform and Presentation Guidelines](#).

[Students](#) are also expected to adhere to Transperth Regulations. Any offences may result an [infringement notice](#) being issued.

You can also refer to Transperth resources and information on how to keep safe on public transport by clicking [here](#).



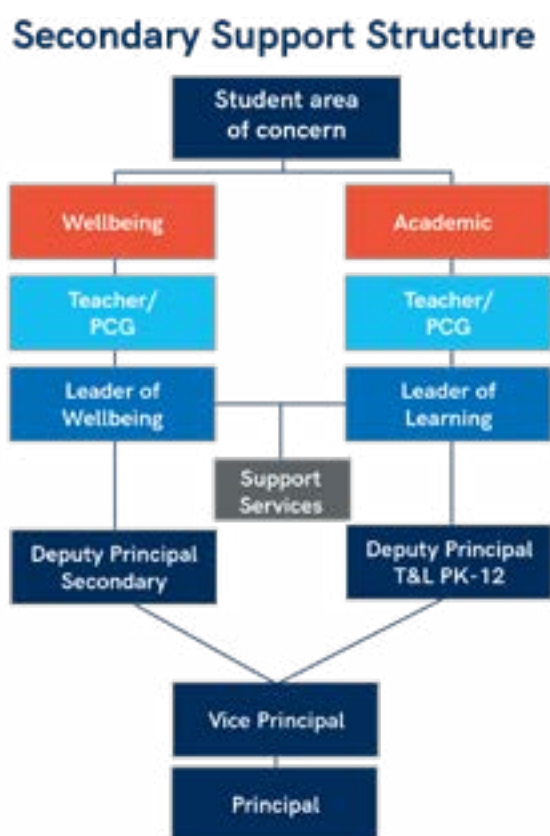
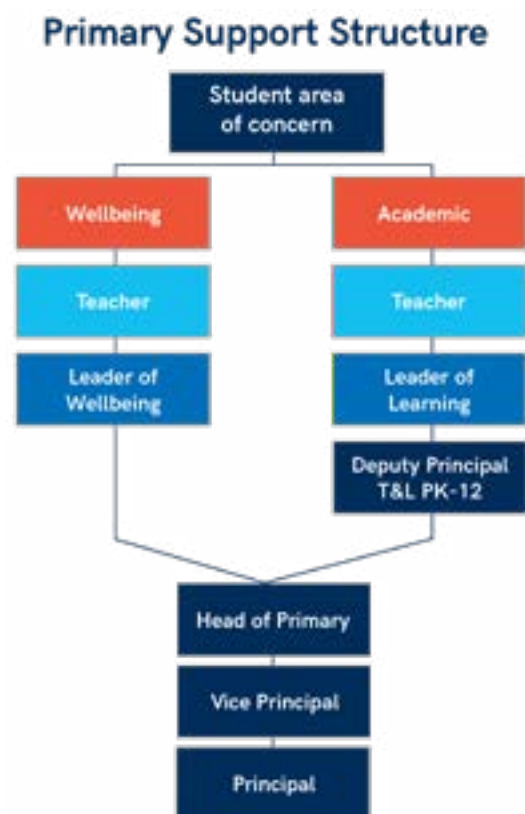
COLLEGE LEADERSHIP

All staff are contactable by email, under the format of firstname.lastname@newman.wa.edu.au. If you are unsure who to direct your query to please refer to the escalation structure below, or you may send an email to newman@newman.wa.edu.au.

NAME	ROLE	TEAM
Executive		
Andrew Watson	Principal	Executive
Beth Murphy	Vice Principal	Executive
Jody Cabalzar	Director of Finance and Operations	Executive
Stuart McClorey	Director of Mission and Catholic Identity	Executive
Sarah Pagett	Deputy Principal Teaching and Learning PK-12	Executive
Bernie Roberts	Director of Curriculum Administration PK-12	Executive
Laura Christopher	Head of Primary	Executive
Anna Scanlan	Deputy Principal Secondary	Executive
Primary Leaders		
Catherine Young	Leader of Learning	Learning
Edwina Battersby	Leader of Wellbeing PK-2	Wellbeing
Jane Short	Leader of Wellbeing Y3-6	Wellbeing
Anne-Marie Terry	Religious Education Coordinator	Learning
Secondary Leaders		
Lara Ogenis	Leader of Wellbeing Year 12	Wellbeing
Nathan Pereira	Leader of Wellbeing Year 11	Wellbeing
David Husband	Leader of Wellbeing Year 10	Wellbeing
Jake Goncalves	Leader of Wellbeing Year 9	Wellbeing
Tiyana Kerimi	Leader of Wellbeing Year 8	Wellbeing
Lara Vlahov	Leader of Wellbeing Year 7	Wellbeing
Helen Leahy	Leader of Learning Religious Education	Learning
Antonia Johnstone	Leader of Learning Education Support	Learning
Narelle Cochran	Leader of Learning English	Learning
Sara Kononen	Leader of Learning Health and Physical Education	Learning
Belinda McCagh	Leader of Learning Humanities and Social Sciences	Learning
David Johnson	Leader of Learning Languages	Learning
Rick Bartlett	Leader of Learning Mathematics	Learning
Fiona Hassell	Leader of Learning Science	Learning
Nicola Winterbourn	Leader of Learning Support and Pedagogy	Learning
Martin Kolka	Leader of Learning Technologies	Learning
Kathy La Brooy	Leader of Learning The Arts	Learning
Justin Farley	Leader of Pathways and Partnerships	
Marnie Barrett	Leader of Sport	Sport

Student Support Structure

The following outlines the appropriate channels for raising and escalating queries or concerns about students.



COMMUNICATION

The official channels for outgoing College Communication are the

- [College App](#)
- [College Newsletter](#)
- [College Website](#)
- Consent2Go - Consent2Go is the College's consent, medical and risk management system, and is used for student excursions, camps and other extracurricular activities.
- [SEQTA Engage](#),
- Email and
- [Seesaw](#) (Primary only).

Respectful Communication

Throughout the year, concerns may arise regarding your child. If this occurs, we ask that you reach out to your child's classroom teacher (Primary), PCG teacher (Secondary Wellbeing) or subject teacher (Secondary Academic) in the first instance. If the concerns are more complex these can be referred to your child's Leader of Wellbeing.

We ask that all communication with staff is respectful and courteous - in line with the [Parent Code of Conduct](#).

Communication Response Times

College staff are expected to respond to contact from students and families within two school days. Families should be aware that all staff have the right to disconnect and are therefore under no obligation to respond outside of school hours.

Social Media

Newman College communicates through various social media channels which are very important tools for information and celebration. We encourage parents to follow us on all our social media pages.

- [Facebook](#)
- [Instagram](#)
- [LinkedIn](#)

Each year group also has a Facebook group where parents within a cohort a forum to share information, promote school events and further support the College. To find the link to your child's year Facebook group, click [here](#).

College Newsletters

The College newsletter is published every fortnight during term. It is emailed to families and uploaded to the [College website](#).

Reports

Reports are published on SEQTA Engage at the end of each semester. Real time results and progress marks in secondary school are visible through 'Assessments'.

Absentees

Please communicate student absences to the College by 9.00am by email or by completing the Absentee Form via the Newman College App.

Primary:

- primary.admin@newman.wa.edu.au

Secondary:

- secondary.admin@newman.wa.edu.au

Planned Absence

As per the Department of Education regulations, the College is obligated to categorise absences as either "Approved" or "Unapproved."

Approved absences include situations such as illness, bereavement, or attendance at College-endorsed events, while unapproved absences encompass holidays or family gatherings during term time.

We understand that there may be occasions when parents/guardians need to make decisions regarding their child's absence for important yet unapproved reasons. We want to highlight that such decisions may negatively impact your child's learning, and possibly result in a zero mark for assessments conducted during the absence, as per our College [Assessment Policies](#). While we acknowledge that there may be unavoidable situations, we encourage you to consider the broader impact on your child's learning journey.

Families are encouraged to take leave during the gazetted school holidays.

Extended Absence

In the event of a planned absence of three days or more, parents/caregivers are to inform the Vice Principal via email beth.murphy@newman.wa.edu.au with the reason for the absence, giving as much notice as possible.

Newman Parent Forum

The Newman Parent Forum (NPF) occurs once a term and is open to all parents/guardians. It is a parent community gathering led by the Principal and Vice Principal, in collaboration with a nominated Newman Parent K-12 Executive Committee. A list of Committee members can be found on the [College website](#).

The NPF works in partnership with the College Executive to support College events, the Strategic Plan and to promote and advocate for the College and parents, both in school and the local community.

These meetings are held in person and via TEAMS. They are also recorded and uploaded to [Newman Parents Forum](#) page if you are unable to attend.

2026 NPF Dates

TERM	DATE	LOCATION
Term 1	Monday 16 March 6.00pm - 7.00pm	JHN Learning Hub and online via TEAMS
Term 2	Monday 8 June 6.00pm - 7.00pm	
Term 3	Monday 7 September 6.00pm - 7.00pm	
Term 4	Monday 9 November 6.00pm-7.00pm	

#These dates may be subject to change

PARTICIPATION IN COLLEGE LIFE

Newman College offers opportunities for students and families to come together and participate in events and activities that not only enrich the faith life of our community, but also support the holistic development of our students. These events play a vital role in fostering family spirit and helping students and families feel connected to our Marist community.

Students must participate in key College events and activities such as Family Mass, Champagnat Day, Feast Days, Retreat Days, Guild Carnivals, Christian Service Learning and other activities

listed on the College calendar. Students who choose not to attend these compulsory activities, unless excused with a valid reason such as illness, may risk eligibility for leadership roles, special tours, and other year-level privileges.

In addition, students are encouraged to participate in a wide range of co-curricular activities, providing them with opportunities to showcase their talents and interests. These activities help students build valuable skills such as teamwork, resilience, and social awareness in a setting beyond the classroom.



PARTICIPATION IN COLLEGE LIFE

2026 Compulsory Events

The key events on the table below are integral to the College's tradition and community and are compulsory for all students to attend. Medical and other appointments should not be booked on these dates or times. *These dates are subject to change.*

Community Mass

All students and families are invited to attend our weekly Community Mass in the Champagnat Chapel, held every Thursday morning, commencing at 8.00am. Each week, the Mass is hosted by a Guild. It is expected that students in that Guild attend where possible.

Event	Date	Time	Students
TERM 1			
High Achievers Assembly	12 Feb	9.30am	Secondary
PK-12 Family Mass	17 Feb	5.30pm - 6.45pm	Whole College
Ash Wednesday Liturgy	18 Feb	10.10am	Whole College
7-12 Guild Swimming Carnival	19 Feb	All Day	Secondary
The Rite Journey: The Calling - Group 1	23 Feb	5.00pm - 6.00pm	Year 9
The Rite Journey: The Calling - Group 2	24 Feb	5.00pm - 6.00pm	Year 9
3-6 Guild Swimming Carnival	27 Feb	All Day	Year 3-6
Year 8 Retreat	23 Mar	All Day	Year 8
TERM 2			
7-12 Guild Cross Country	29 Apr	All Day	Secondary
Lavalla Guild Cross Country	1 May	All Day	Primary
Year 9 Retreat	14 May	All Day	Year 9
Year 7 Retreat	18 May	All Day	Year 7
Year 12 Retreat	8-12 Jun	All Day	Year 12
Champagnat Day	19 Jun	All Day	Whole College
Year 11 Leadership Retreat	1-2 Jul	All Day	Year 11
TERM 3			
Year 10 Retreat	23 Jul	All Day	Year 10
Semester 1 High Achievers Assembly	5 Aug	9.35am	Secondary
7-12 Guild Athletics Carnival	6 Aug	All Day	Secondary
Lavalla Guild Athletics Carnival	7 Aug	All Day	Primary
Assumption Day	14 Aug	All Day	Whole College
TERM 4			
The Rite Journey: The Abyss	13 - 16 Oct	All Day	Year 9
St John Henry Newman Mass	16 Oct	8.50am	Whole College
Primary Awards & Carols	3 Dec	5.00pm	Primary
The Rite Journey: Homecoming - Group 1	24 Nov	5.00pm - 6.00pm	Year 9
The Rite Journey: Homecoming - Group 2	25 Nov	5.00pm - 6.00pm	Year 9

Christian Service Learning – Living Marist

Participation in College life includes wholehearted engagement in our Living Marist Christian Service-Learning program. Through service, students are invited to put faith into action, responding to the needs of others with compassion, humility, and a strong sense of social responsibility. This program is central to our Marist vision of forming good Christians and good citizens, helping young people grow not only in skill and knowledge, but in empathy, justice, and care for the dignity of all.

Colours and Honours - Secondary

In 2026 the College will introduce a new Colours and Honours system to recognise significant student contributions in Academic, Mission, Sport and Arts portfolios. Student can achieve points through participation in co-curricular activities, receiving awards and acknowledgements and attending College events. Students who achieve over 50 points in a particular portfolio will receive a colours badge, and those who achieve over 100 points will receive their honours badge. Further information will be distributed to students and families early in Term 1.

Newman College Norms

Our Vision for Learning: Let your light shine (Matthew 5:16) reflects the Marist charism of Newman College and our unwavering belief that all members of our community can develop their unique abilities. To live out this vision to its truest potential, we respect and agree to a series of reasonable 'non-negotiables'. The Newman College Norms bring expectation to light and therefore promote psychological safety for all community members. The Newman Norms are linked below.

- [Secondary - Newman Norms](#)
- [Primary - Newman Norms](#)



PARTICIPATION IN COLLEGE LIFE

Code of Conduct

We recognise that effective learning can only occur in a secure environment where the rights and responsibilities of others are known and respected and where standards and rules are fairly and consistently applied.

Managing the Code of Conduct is a shared responsibility between students, parents/guardians, and the College. We are expected to uphold the values of Newman College, not only at school, but also within the broader community.

Student Code of Conduct

The student code of conduct is available [here](#).

Parent Code of Conduct

At Newman College, we value a strong partnership between parents, students and staff, grounded in mutual respect, trust and shared responsibility for student wellbeing and learning.

The Parent Code of Conduct outlines the expectations for respectful, constructive and courteous communication within our community. It is designed to ensure that all interactions support a safe, professional and collaborative environment for students, families and staff.

By adhering to the Parent Code of Conduct, parents play an important role in modelling positive behaviours, supporting effective communication, and contributing to a culture where concerns are addressed appropriately and solutions are sought in a spirit of partnership.

Behaviour Support Policy

The College recognises that students learn best when they are in a safe and settled environment, where there are clear and consistent norms and high expectations for social behaviour. Our Behaviour Support Policy is centred on developing and promoting respectful and positive relationships within the College community. Students will receive positive guidance and encouragement that promotes a learning environment where the dignity of all is valued and celebrated. Families are asked to familiarise themselves with our [Behaviour Support Policy](#).

College Mobile Phone Policy

Our College Mobile Phone Policy is in support of our Child Safeguarding practices.

- [Primary Student Mobile Device Procedures](#)
- [Secondary Student Mobile Device Procedures](#)

Lavalla Students Years 3-6

Parents/Guardians must sign and return a Lavalla Mobile Phone Consent Form before they are permitted to bring their mobile phones to school.

No calls or messages are to be made or taken on mobile phones and/or devices (e.g. smartwatches) between the hours of 8.40am and 3.00pm, unless permission is given. Students who need to contact their parents urgently should visit the Administration office.

Mobile phones and/or devices cannot be carried or used by students throughout the school day and must be switched off, or on silent and

placed in their bag. Mobile phones that can be seen or heard will be confiscated by the teacher and a consequence issued.

Marcellin Students Years 7-12

Secondary students are not permitted to use their mobile phone during the school day and are required to store their mobile phones in their locker. The mobile phone must remain in the locker until the end of the day and can only be used when students are leaving the College, after 3.15pm. Students who need to contact their parents urgently should visit the Administration office.

Students found in possession of their mobile phone on College grounds will have it confiscated and will only be permitted to collect it from the Leader of Wellbeing Office at the end of the school day. Payment by mobile phone is not permitted at the Canteen.

College Detentions - Secondary

College Detentions are held on Mondays from 3.20pm to 4.20pm

Newman Sports Association

Newman Sports Association (NSA) is made up of eight community sporting clubs, based out of the facilities at Newman College. Families can find out more about NSA and its associated clubs [here](#).



COLLEGE UNIFORM

All students are required to adhere to the [Uniform Requirements and Personal Appearance Guidelines](#). Students who do not meet the College's uniform expectations will be required to address the issue before attending classes.

Students are required to wear full academic uniform on all days, unless parents have notified the Deputy Principal Secondary or Head of Primary via email.

Personal Presentation

Personal appearance needs to be in line with College expectations. This includes, but is not limited to, correct hair length and style, jewellery, skirt length and correct shoes.

- Hair, for both boys and girls, that is longer than the bottom of the collar must be tied back and clear of the face. Extreme hair styles (mullets, extreme fade, shaved sides) and changes of hair colour are not permitted.
- All students are permitted to wear one earring in the lower lobe in each ear. No other piercings are permitted. No clear spaces are permitted to keep new piercings open. Tape is not permitted to cover piercings.
- Skirts must reach the top part of the knee or be longer when standing.
- Formal shoes must have a hard sole and laces.

The above list is not exhaustive and further detail can be accessed in the full [Uniform Requirements and Personal Appearance Guidelines](#). Students who are in breach of the expectations will be asked to rectify the situation.

SunSmart

Newman College is a SunSmart school. In the Primary School, students must wear College hats whenever they are outdoors. For Secondary students, hats must be worn during Term 1 and Term 4, when outside.

Uniform Shop

Uniform items can be purchased online or at the Uniform Shop (no cash payments accepted) located on the Marcellin Campus. The opening hours are:

- Tuesday: 8.30am - 4.30pm
- Wednesday: 12.30pm - 5.30pm

Please contact Mrs Diana Potter, Uniform shop Manager for any queries, 9204 9470 or uniform@newman.wa.edu.au.



TEACHING AND LEARNING

Technology

The College uses Teams and OneNote as the sole delivery and engagement platform for student learning in Secondary. Training in the use of Teams and OneNote begins from Year 4. Seesaw is the key teaching and learning tool for the Primary years.

College owned and managed iPads are now operational from Years 2 to 5. We are phasing out the Bring Your Own iPad Program in the Primary in favour of College-owned and managed devices. Year 6 will continue with providing their own iPads in 2026. From Year 7, students are asked to purchase a Bring Your Own Designated Device, as communicated by ICT.

The College strongly recommends all parents take out extended warranty, theft and accidental damage insurance coverage on devices for the duration of their use. Parents may be able to add their child's BYOD device as a portable item to their home contents insurance.

Newman College takes no responsibility for stolen, lost, or damaged devices, including lost or corrupted data on those devices. In the event of loss, theft or damage, students must immediately report the incident to the ICT Department, PCG teacher and parents. If any problems occur with the device or with the Windows operating system (including damages), the College ICT Department will diagnose the issue. If the device requires repair or replacement, the ICT Department will advise the appropriate course of action.

Further information can be found in our [Bring Your Own Designated Device \(BYOD\) Policy](#).

Assessment Guidelines and Procedures - Secondary

The Assessment Guidelines and Procedures for [Years 7 - 9](#) and [Years 10 - 12](#) reflect the rigour that the College and the School Curriculum and Standards Authority expect. Please familiarise yourselves with these important guidelines and procedures.

Missed Assessments

To maximise time within the classroom and to ensure assessment conditions are monitored, the College provides three Missed Assessment Sessions a week for students to attend:

- Tuesday 7.30 - 8.30am
- Wednesday 3.20 - 4.20pm
- Friday 7.30 - 8.30am

Missed assessments will take place in the Examination Centre (unless otherwise communicated) and students who are required to complete a missed assessment must comply with the Missed Assessment Student Norms.

Homework Club

Homework Club provides students with a place to study, collaborate with their peers and complete homework or unfinished classwork. Teachers and homework club tutors are available to assist students with tasks and questions they might have. Students are encouraged to take advantage of this valuable resource. **Primary students are not permitted to attend Homework Club in JHN.**

Year Level	Location	Day and Time
Year 3-6	3-6 Building [Ground Floor]	Tuesday 3.00pm-4.30pm
Year 7-12	St John Henry Newman Learning Hub [Level 1]	Monday to Thursday 3.15pm-5.00pm

GENERAL INFORMATION

Equip Guide Thrive

Equip Guide Thrive is a holistic development program which will commence in the secondary school in 2026. The program is evidenced-based and prioritises the importance of holistic development during adolescence. The program is designed to equip students with the skills to be successful, guide them as they practice and master these skills, and graduate thriving. All secondary students will attend Equip Guide Thrive lessons on Tuesdays.

Our Year 7 and Year 8 program embodies the themes of embrace and growth: giving students the capacity and confidence to embrace all that secondary school has to offer and develop holistically as they embrace these opportunities.

Our Year 9 program acknowledges the daunting step from childhood to adulthood, adding additional adult mentors to support the students in their journey to adulthood.

Our Year 10 program seeks to uncover the potential of our students: providing them with time and space to practise the skills learnt from Year 7-9, as they select their senior school and post-secondary pathways and careers.

In Year 11 and Year 12, our staff walk with our students as they finish their secondary education journey graduating thriving.

Canteen

The College Canteen operates daily for students across all Campuses.

- **Primary Students** - Lunch must be pre-ordered online via FlexiSchools before 8.30am.
- **Secondary Students** - FlexiSchools is the preferred method of ordering for students at Marcellin, however there is the option of purchasing pre-prepared items at recess and lunch time. Payment is preferred electronically. **Payment using mobile phone will not be accepted.**

Further information on Flexi-schools is available [here](#).

Student Illness

If your child is feeling unwell or displaying symptoms of an illness, please ensure they are kept at home, this is to protect all members of our community, and prevent the spread of illness.

If your child becomes unwell at school, they are not permitted to use their mobile phone to contact home, students who do so are in breach of Colleges mobile phone policy and may receive a consequence as a result. Students on the Lavalla Campus should present to the Administration office for treatment and students on Marcellin Campus, should advise their teacher and present to the Student Reception for treatment.

